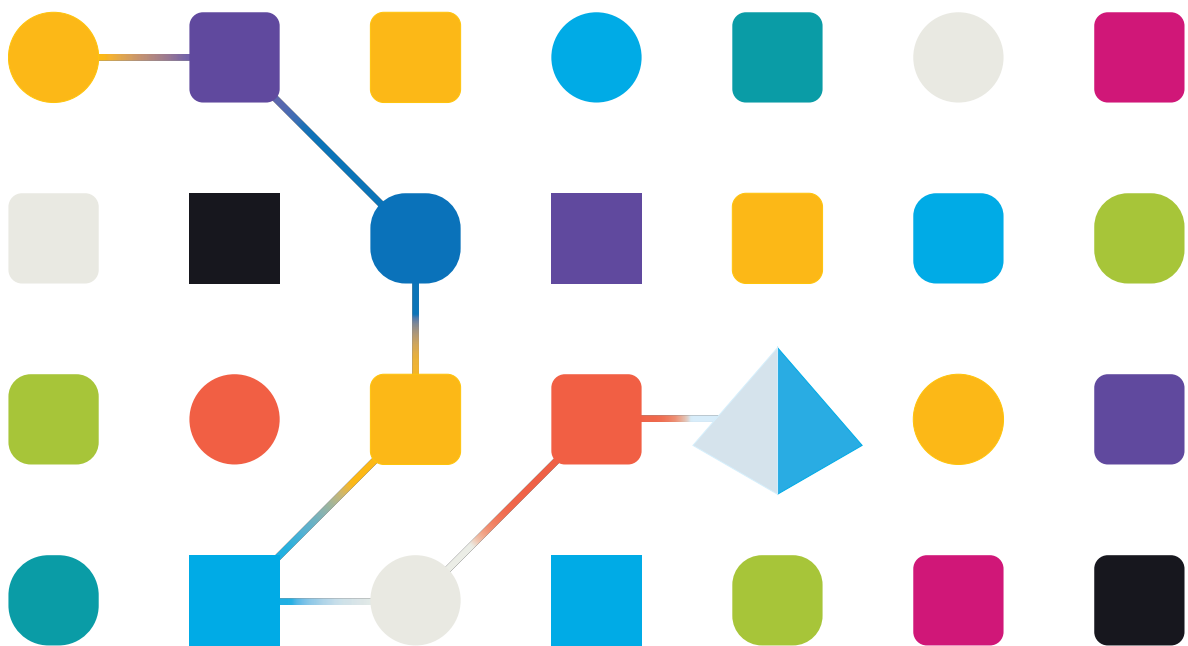




Hub and Interact 4.3

Security Reference Guide

Document Revision: 1.0



Trademarks and Copyright

The information contained in this guide is the proprietary and confidential information of Blue Prism Cloud Limited and/or its affiliates and should not be disclosed to a third-party without the written consent of an authorized Blue Prism representative. No part of this document may be reproduced or transmitted in any form or by any means, electronic or mechanical, including photocopying without the written permission of Blue Prism Cloud Limited or its affiliates.

© Blue Prism Cloud Limited 2001 – 2021

“Blue Prism”, the “Blue Prism” logo and Prism device are either trademarks or registered trademarks of Blue Prism Limited and its affiliates. All Rights Reserved.

All other trademarks are hereby acknowledged and are used to the benefit of their respective owners. Blue Prism Cloud Limited and its affiliates are not responsible for the content of external websites referenced by this guide.

Blue Prism Limited, 2 Cinnamon Park, Crab Lane, Warrington, WA2 0XP, United Kingdom.
Registered in England: Reg. No. 4260035. Tel: +44 870 879 3000. Web: www.blueprism.com

Contents

Blue Prism Interact Security	4
Encryption	5
Authentication	6
Network connectivity	7
Logging	8

Blue Prism Interact Security

This document provides a functional and technical point of reference to help with customer concerns, compliance queries, and incoming Request for Proposals (RFP) around security. This guide covers the following:

- [Encryption](#)
- [Authentication](#)
- [Network connectivity](#)
- [Logging](#)

Encryption

Blue Prism Interact uses the following encryption methods:

Algorithm	Description
Traffic encryption	<p>Enable HTTPS only communication for production. Requires customers to provide TLS certificates for all web applications and all communication channels must be secured.</p> <p>For more information about configuring certificates, see the online help.</p>
Data protection	<p>The Hub installer generates a PFX certificate and saves it to Trusted Root Certificate Authorities. All applications use it to encrypt sensitive data, such as connection strings in the appsettings.json file.</p> <p>Data protection uses the following default algorithms:</p> <ul style="list-style-type: none">• Encryption Algorithm is AES-256-CBC• Validation Algorithm is HMACSHA256 <p>The key size is 2048 bit.</p>
JWT token signing	<p>The Hub installer generates a PFX certificate and saves it to Trusted Root Certificate Authorities. The Identity Server uses it to encrypt the JWT token and to validate the license file.</p> <p>The JWT token is encrypted by the RSA-SHA-256 algorithm and the key size is 2048 bit.</p>
Authentication Server	<p>This is the authorization server - users login via the Authentication Server which determines the components they have access to.</p> <p>The authentication server uses SHA-256 to hash the client secret and client ID.</p>
Password Storage	<p>The ASP.NET Identity library is used for password hashing and uses the following algorithms:</p> <ul style="list-style-type: none">• PBKDF2 with HMAC-SHA256• 128-bit salt• 256-bit subkey• 10000 iterations

The license key is encrypted by the RSA-SHA-512 algorithm.

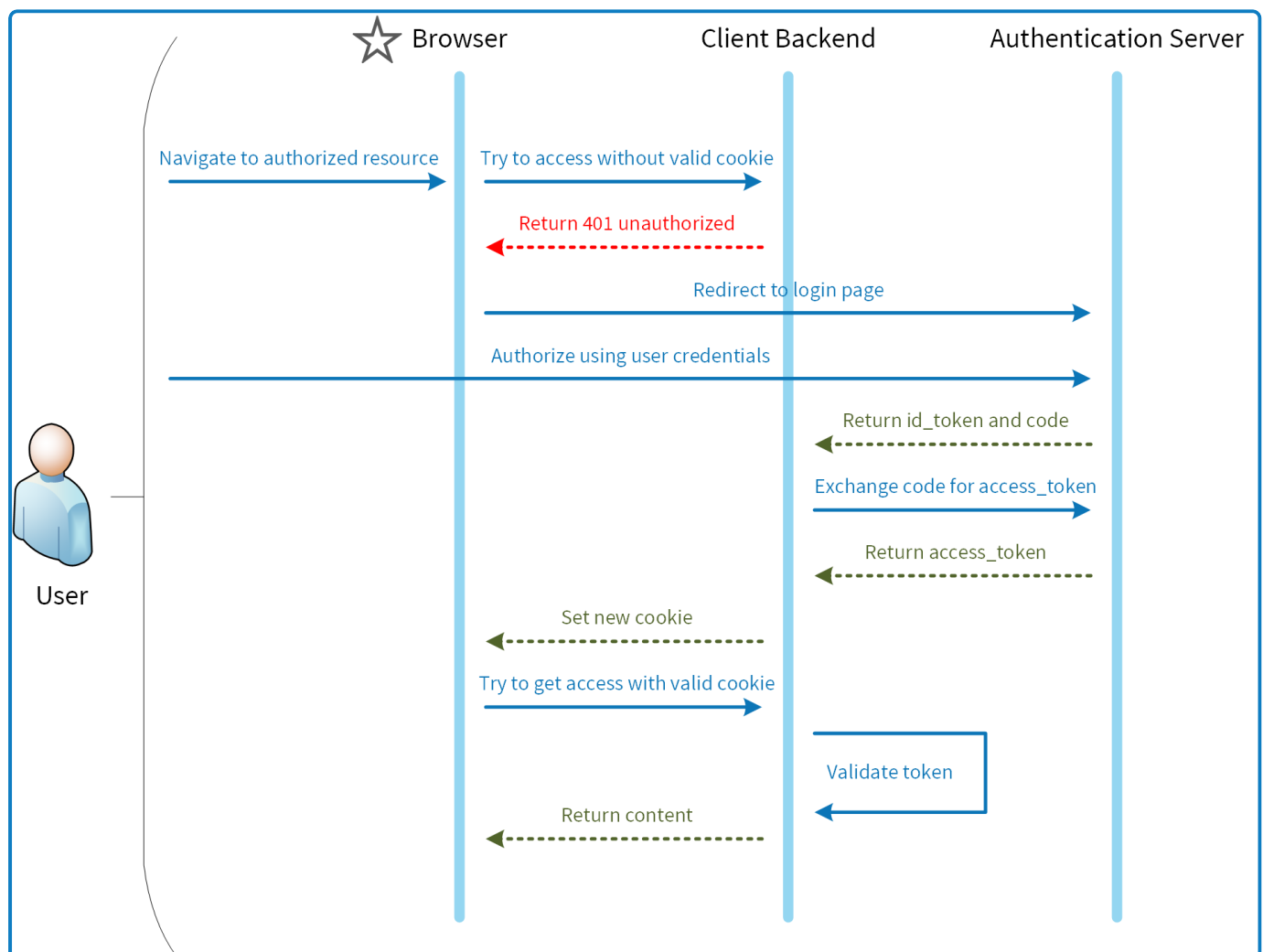
Database encryption can be provided by the Microsoft encryption mechanism (Transparent Data Encryption - TDE) but must be manually implemented on each database. For more info see: docs.microsoft.com.

TLS defaults to the host operating system configuration for both TCP and HTTP communications, selecting the best security protocol and version. Available protocols and ciphers are managed by the end user or automatically handled through Microsoft security updates.

Authentication

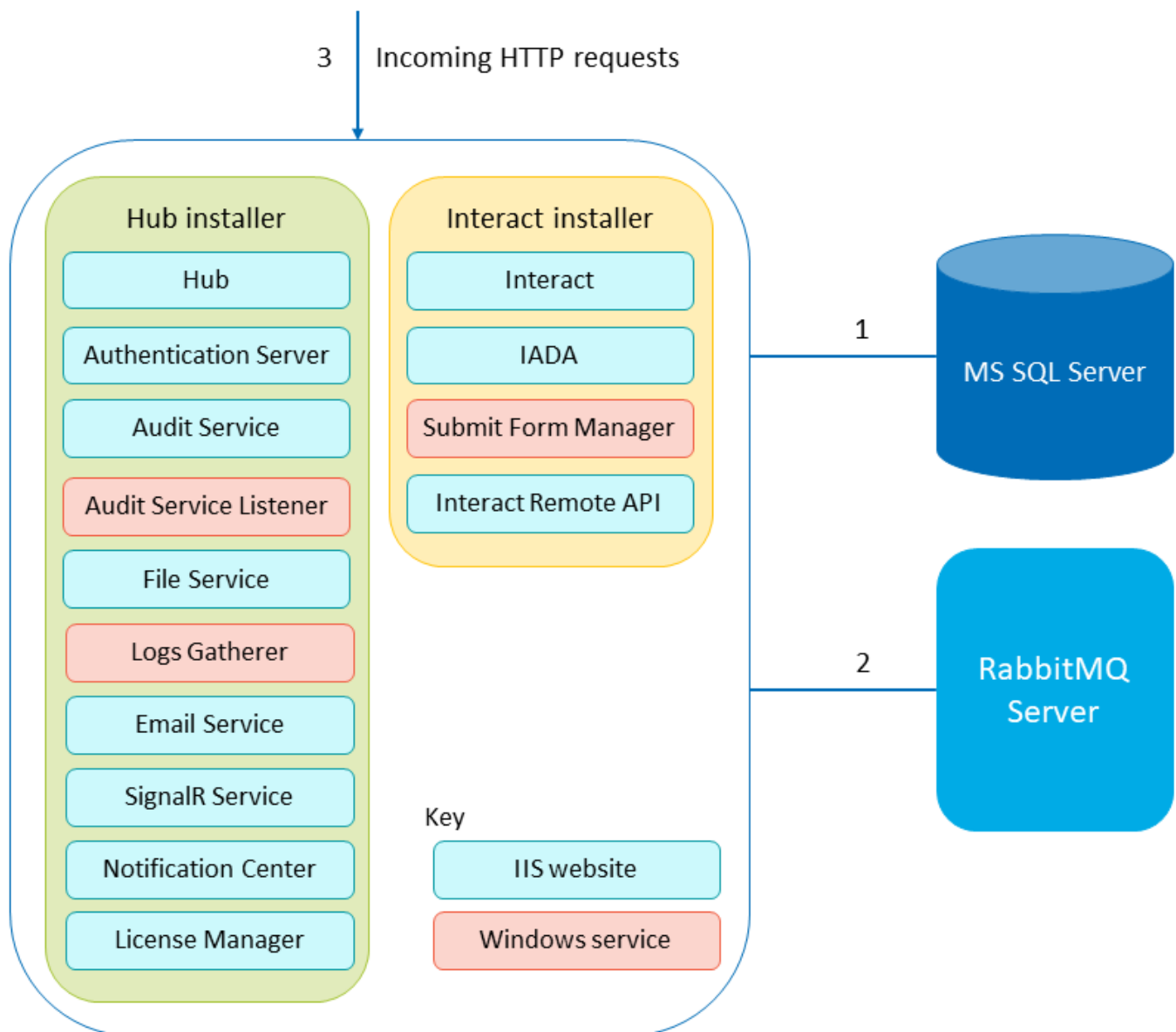
Authentication in Interact is outlined below:

- An Authentication Server is provided which is implemented by the OpenId Connect protocol.
- All users' API calls are authorized.
- All API calls between applications are authorized.
- The access token is stored in HTTPS cookies only which cannot be intercepted or modified.



Network connectivity

The diagram provides an overview of the common communication that occurs with the Interact platform.



1. Secured by TLS - Certificate-based encryption is supported by leveraging SQL Server functionality which can auto-generate self-signed certificates or leverage an existing verifiable certificate.
2. Using AMQP protocol.
3. Connection is secured via HTTPS by default.

Logging

Blue Prism Interact logging performed in Interact is outlined below:

- Logs are saved to TXT files in user configurable locations – the default location is in the Blue Prism > Interact folder within the installation directory but this can be configured by editing the value of the following line in the nlog.configfile, located in the Interact folder of the installation directory:

```
<variable name="logsFolder" value=".\\Logs_Interact"/>
```

Where `.\` is the Interact installation directory. By default, this is C:\Program Files (x86)\Blue Prism\Interact\

Once updated, restart IIS.

- The default logging level can be configured in the appsettings.json file:
 - Default: Information
 - System: Warning
 - Microsoft: Warning

The following logging levels can be applied: Critical, Debug, Error, Information, None, Trace, Warning. For more information about these logging levels, see [docs.microsoft.com](https://docs.microsoft.com/en-us/aspnet/core/logging).

The file is located in the Blue Prism > Interact folder within the installation directory – edit the file to change the logging levels. Following an update to the logging level, World Wide Web Publishing service must be restarted for the change to take effect.

- Logs are archived to zip files every month to reduce the file size volume.
- Logs do not contain any personal or sensitive information.